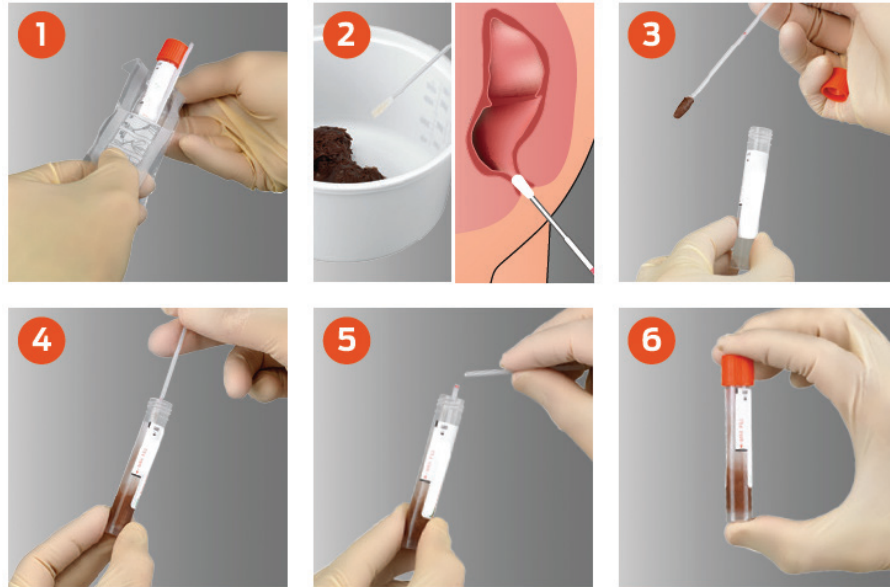


## GI SWAB



Quickly identify the correct pathogen to ensure appropriate treatment, patient management and help decrease infectious gastroenteritis which can lead to severe illness or death.

### 22 TARGETS IN ONE TEST



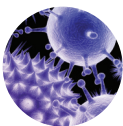
#### BACTERIA:

Campylobacter (jejuni, coli and upsaliensis)  
Clostridium difficile (toxin A/B)  
Plesiomonas shigelloides  
Salmonella  
Yersinia enterocolitica  
Vibrio (parahaemolyticus, vulnificus and cholerae)  
Vibrio cholerae



#### DIARRHEAGENIC E. COLI/SHIGELLA:

Enteroaggregative E. coli (EAEC)  
Enteropathogenic E. coli (EPEC)  
Enterotoxigenic E. coli (ETEC) lt/st  
Shiga-like toxin-producing E. coli (STEC) stx1/stx2  
E. coli O157  
Shigella/Enteroinvasive E. coli (EIEC)



#### VIRUSES:

Adenovirus F40/41  
Astrovirus  
Norovirus GI/GII  
Rotavirus A  
Sapovirus (I, II, IV & V)



#### PARASITES:

Cryptosporidium  
Cyclospora cayetanensis  
Entamoeba histolytica  
Giardia lamblia